

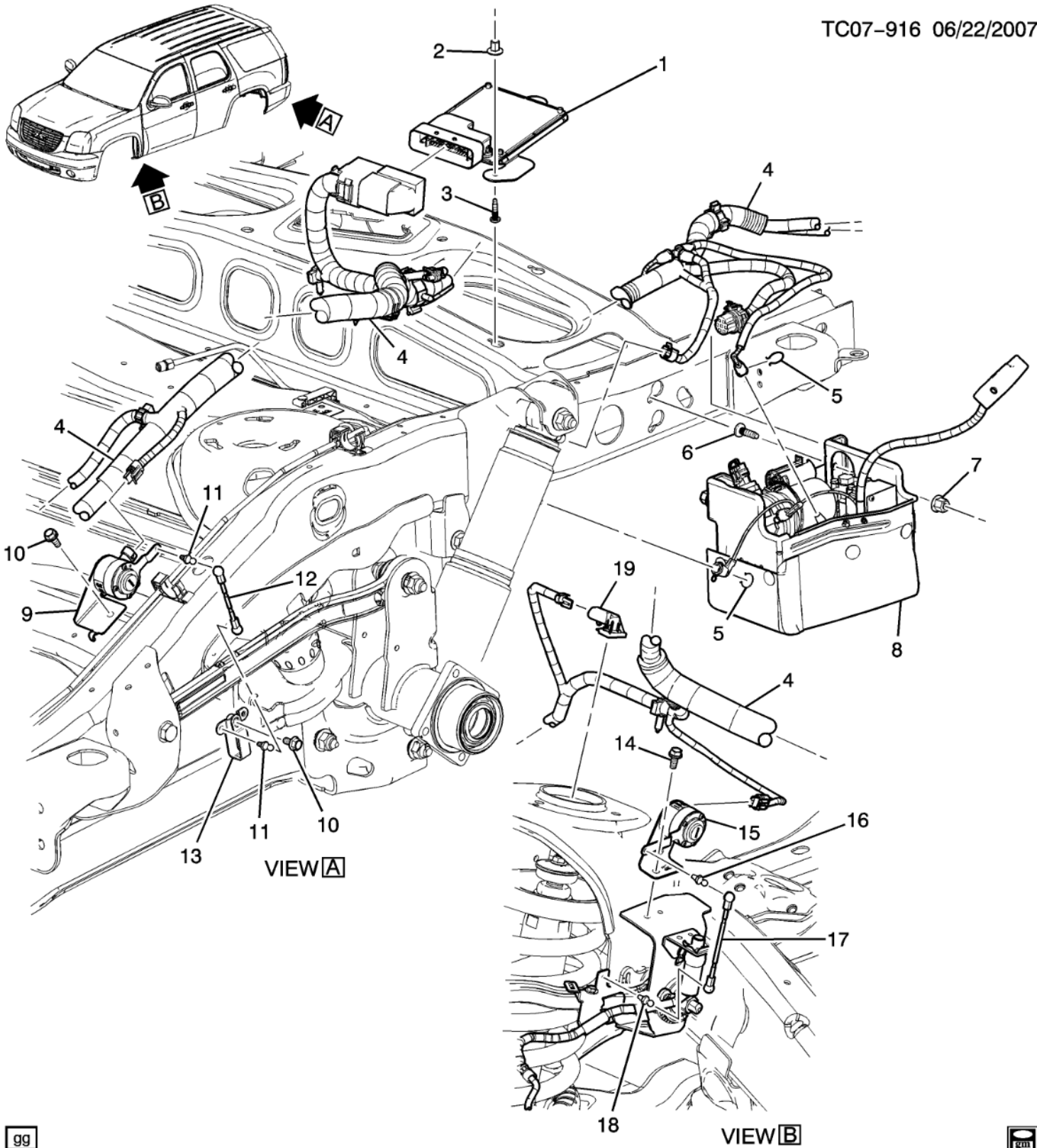


VIN: 1GKS2EEF0CR167640

L - Light Truck>2012>K - 57C - TK10706 - Tahoe/Yukon/Escalade - 06 Bodystyle (4WD/AWD)>07 - FRAMES-SPRINGS-SHOCKS-BUMPERS>(TC07-916) 2009-2013 CK1(06-36) SUSPENSION CONTROLS/ELECTRONIC (REAL-TIME DAMPING Z55, MAGNERIDE Z95, EXC HYBRID HP2)

 =  Single Use Part

TC07-916 06/22/2007



Make: Light Truck

Year: 2012

Model: Tahoe/Yukon/Escalade - 06 Bodystyle (4WD/AWD)

VIN: 1GKS2EEF0CR167640

L - Light Truck>2012>K - 57C - TK10706 - Tahoe/Yukon/Escalade - 06 Bodystyle (4WD/AWD)>07 - FRAMES-SPRINGS-SHOCKS-BUMPERS>(TC07-916) 2009-2013 CK1(06-36) SUSPENSION CONTROLS/ELECTRONIC (REAL-TIME DAMPING Z55, MAGNERIDE Z95, EXC HYBRID HP2)

Call	Part #	Group	H	Description	Usage	Year	Qty
1	25971217	07.450		MODULE, ELEK SUSP CONT (INCLS 2,3) (Service Lane Part)	CK1 (06-36) (Z55)	2008 - 2013	01
2		NS		NUT, ELEK SUSP CONT MDL (PART OF 1)		2009 - 2013	
3		NS		BOLT, ELEK SUSP CONT MDL (PART OF 1)		2009 - 2013	
4		02.480		HARNESS, CHAS WRG (SEE GROUP 02 "WIRING HARNESS/CHASSIS" FOR DETAILED ILLUSTRATED VIEW) (INCLS 5,19))		2007 - 2014	
5		NS		RETAINER, AUTO LVL CONT AIR CMPR TUBE (PART OF 4)		2009 - 2013	
6		NS		BOLT, AUTO LVL CONT AIR CMPR BR (PART OF 8)		2009 - 2013	
7		NS		NUT, AUTO LVL CONT AIR CMPR (PART OF 8)		2009 - 2013	
8		07.455		COMPRESSOR, AUTO LVL CONT AIR (INCLS 6,7) (SEE GROUP 07 "LEVEL CONTROL COMPRESSOR/AUTOMATIC" FOR DETAILED ILLUSTRATED VIEW) (CODE 1806) (Service Lane Part)		2007 - 2014	
9	20917434	07.475	L	SENSOR, ELEK SUSP RR POSN (INCLS 11-13) (MATING CONNECTOR USE P/N 12085538) (Service Lane Part)	CK1 (06-36) (Z55,Z95)	2011 - 2013	01
9	20917435	07.475	R	SENSOR, ELEK SUSP RR POSN (INCLS 11-13) (MATING CONNECTOR USE P/N 12085538) (Service Lane Part)	CK1 (06-36) (Z55,Z95)	2011 - 2013	01
10	11516885	08.977		SCREW, HFH W/FL WA,TAP,M8X1.25X20,7THD,17 O.D.,TR PT, 6202M,PZOR (ELEK SUSP RR POSN SEN BRKT) (ACDelco #11516885) (Service Lane Part)		2007 - 2014	04
11		NS		STUD, ELEK SUSP RR POSN SEN LINK BALL (PART OF 9,13)		2009 - 2013	
12	22189722	07.477		LINK, ELEK SUSP RR POSN SEN (PART OF 9) (Service Lane Part)	CK1 (06-36) (Z55)	2007 - 2013	02

Call	Part #	Group	H	Description	Usage	Year	Qty
13		NS		BRACKET, ELEK SUSP RR POSN SEN (PART OF 9)		2011 - 2014	
14	11516885	08.977		SCREW, HFH W/FL WA,TAP,M8X1.25X20,7THD,17 O.D.,TR PT, 6202M,PZOR (ELEK SUSP FRT POSN SEN BRKT) (ACDelco #11516885) (Service Lane Part)		2007 - 2014	02
15	15098628	07.475	L	SENSOR, ELEK SUSP FRT POSN (INCLS 16,17) (MATING CONN USE 12085538 3-WAY W/LEADS) (Service Lane Part)	CK1 (06-36) (Z55)	2007 - 2013	01
15	15098629	07.475	R	SENSOR, ELEK SUSP FRT POSN (INCLS 16,17) (MATING CONNECTOR USE P/N 12085538) (Service Lane Part)	CK1 (06-36) (Z55)	2007 - 2013	01
16		NS		STUD, ELEK SUSP FRT POSN SEN LINK BALL (PART OF 15)		2009 - 2013	
17	25379115	07.477		LINK, ELEK SUSP FRT POSN SEN (PART OF 15) (Service Lane Part)	CK1 (06-36) (Z55)	2007 - 2013	02
18	10271003	07.477		STUD, ELEK SUSP FRT POSN SEN LINK BALL (M6X1X9.5) (HEX, 8 DIA BALL STYLE) (TAPPING THREAD) (Service Lane Part)	CK1 (06-36) (Z55,Z95)	2008 - 2013	02
19	13586171	07.460		CONNECTOR, SOL-S/ABS ELEK SUSP CONT ACTR (PART OF 4) (2-WAY MALE) (W/LEADS) (2.530) (Service Lane Part)	CK1,2 (06-36)	2011 - 2013	02

Make: Light Truck

Year: 2012

Model: Tahoe/Yukon/Escalade - 06 Bodystyle (4WD/AWD)

VIN: 1GKS2EEF0CR167640

L - Light Truck>2012>K - 57C - TK10706 - Tahoe/Yukon/Escalade - 06 Bodystyle (4WD/AWD)>07 - FRAMES-SPRINGS-SHOCKS-BUMPERS>(TC07-916) 2009-2013 CK1(06-36) SUSPENSION CONTROLS/ELECTRONIC (REAL-TIME DAMPING Z55, MAGNERIDE Z95, EXC HYBRID HP2)

Regulatory Information - Warnings displayed by Part Description

- Part Description - MODULE, ELEK SUSP CONT (INCLS 2,3) (Service Lane Part)
WARNING: Cancer and Reproductive Harm - www.P65Warnings.ca.gov
- Part Description - SENSOR, ELEK SUSP RR POSN (INCLS 11-13) (MATING CONNECTOR USE P/N 12085538) (Service Lane Part)
WARNING: Cancer and Reproductive Harm - www.P65Warnings.ca.gov
- Part Description - SCREW, HFH W/FL WA,TAP,M8X1.25X20,7THD,17 O.D.,TR PT,6202M,PZOR (ELEK SUSP RR POSN SEN BRKT) (ACDelco #11516885) (Service Lane Part)
WARNING: Cancer and Reproductive Harm - www.P65Warnings.ca.gov
- Part Description - LINK, ELEK SUSP RR POSN SEN (PART OF 9) (Service Lane Part)
WARNING: Cancer and Reproductive Harm - www.P65Warnings.ca.gov
- Part Description - SCREW, HFH W/FL WA,TAP,M8X1.25X20,7THD,17 O.D.,TR PT,6202M,PZOR (ELEK SUSP FRT POSN SEN BRKT) (ACDelco #11516885) (Service Lane Part)
WARNING: Cancer and Reproductive Harm - www.P65Warnings.ca.gov
- Part Description - SENSOR, ELEK SUSP FRT POSN (INCLS 16,17) (MATING CONN USE 12085538 3-WAY W/LEADS) (Service Lane Part)
WARNING: Cancer and Reproductive Harm - www.P65Warnings.ca.gov
- Part Description - SENSOR, ELEK SUSP FRT POSN (INCLS 16,17) (MATING CONNECTOR USE P/N 12085538) (Service Lane Part)
WARNING: Cancer and Reproductive Harm - www.P65Warnings.ca.gov
- Part Description - LINK, ELEK SUSP FRT POSN SEN (PART OF 15) (Service Lane Part)
WARNING: Cancer and Reproductive Harm - www.P65Warnings.ca.gov
- Part Description - STUD, ELEK SUSP FRT POSN SEN LINK BALL (M6X1X9.5) (HEX,8 DIA BALL STYLE) (TAPPING THREAD) (Service Lane Part)
WARNING: Cancer and Reproductive Harm - www.P65Warnings.ca.gov
- Part Description - CONNECTOR, SOL-S/ABS ELEK SUSP CONT ACTR (PART OF 4) (2-WAY MALE) (W/LEADS) (2.530) (Service Lane Part)
WARNING: Cancer and Reproductive Harm - www.P65Warnings.ca.gov