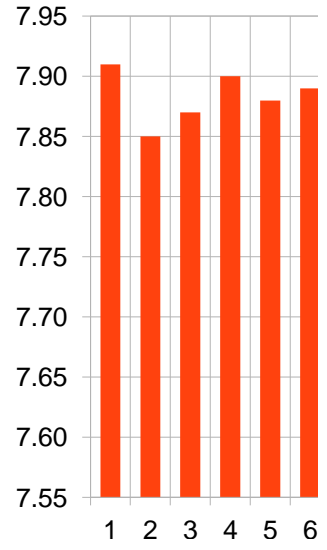
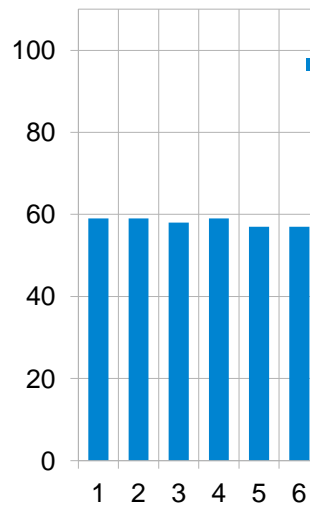
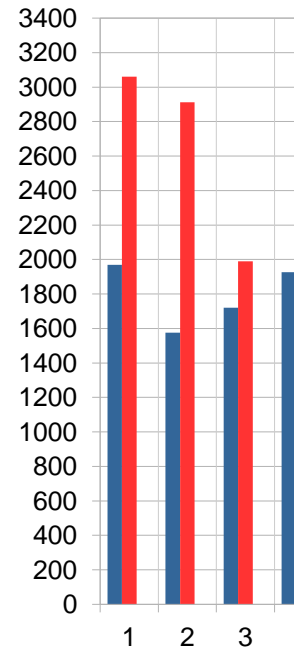


Module Data

Testing Started February 24th 2019

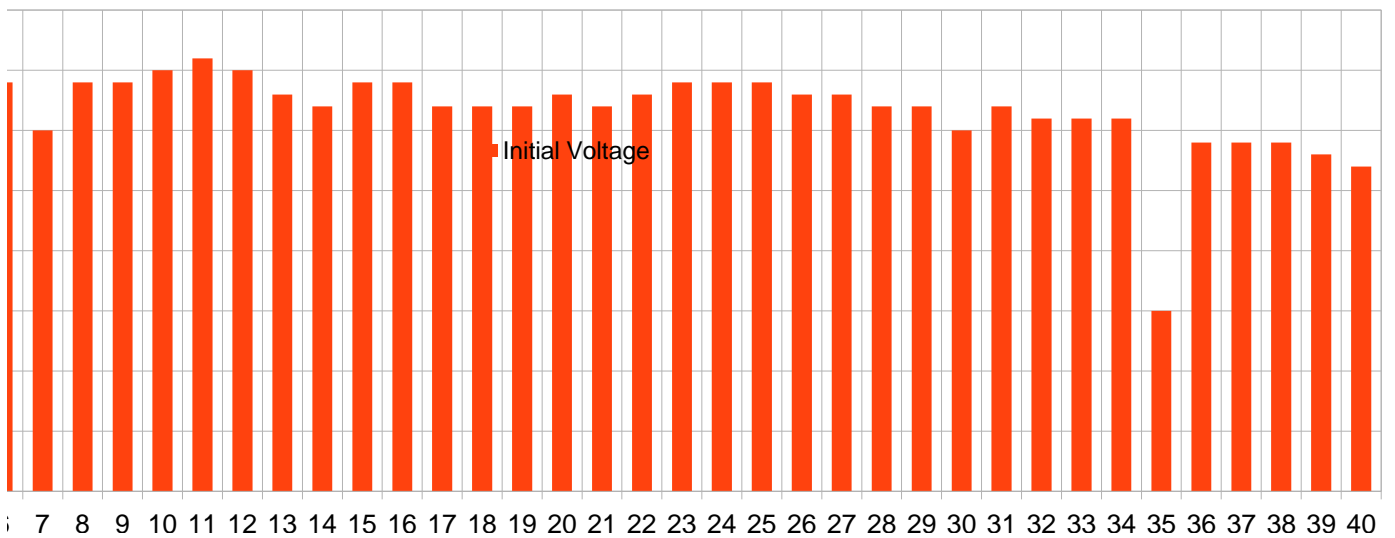
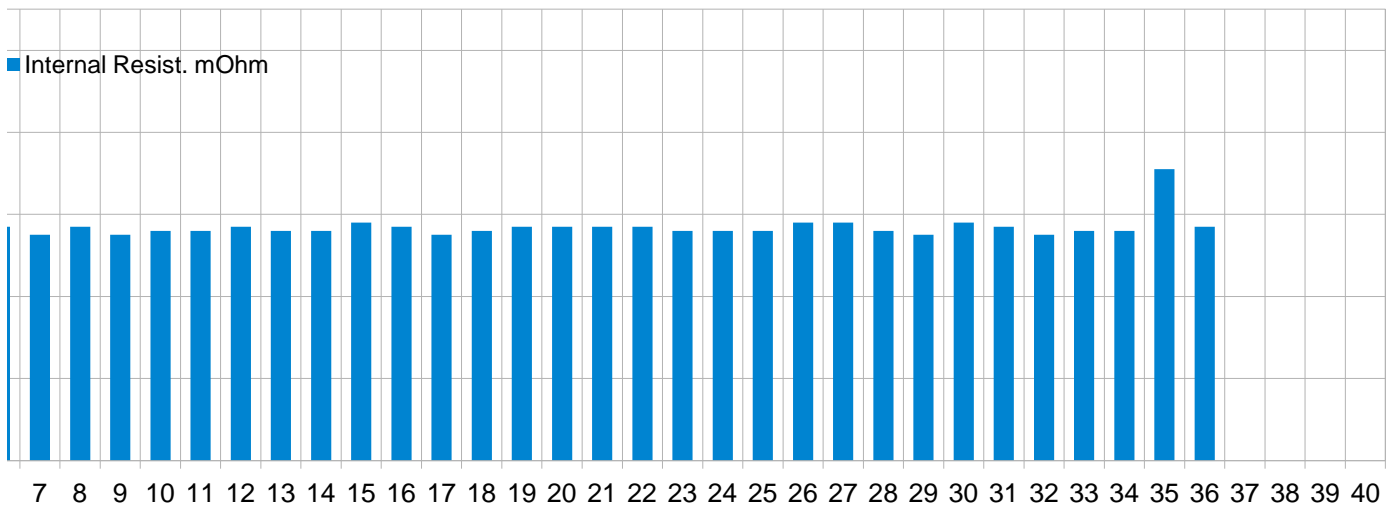
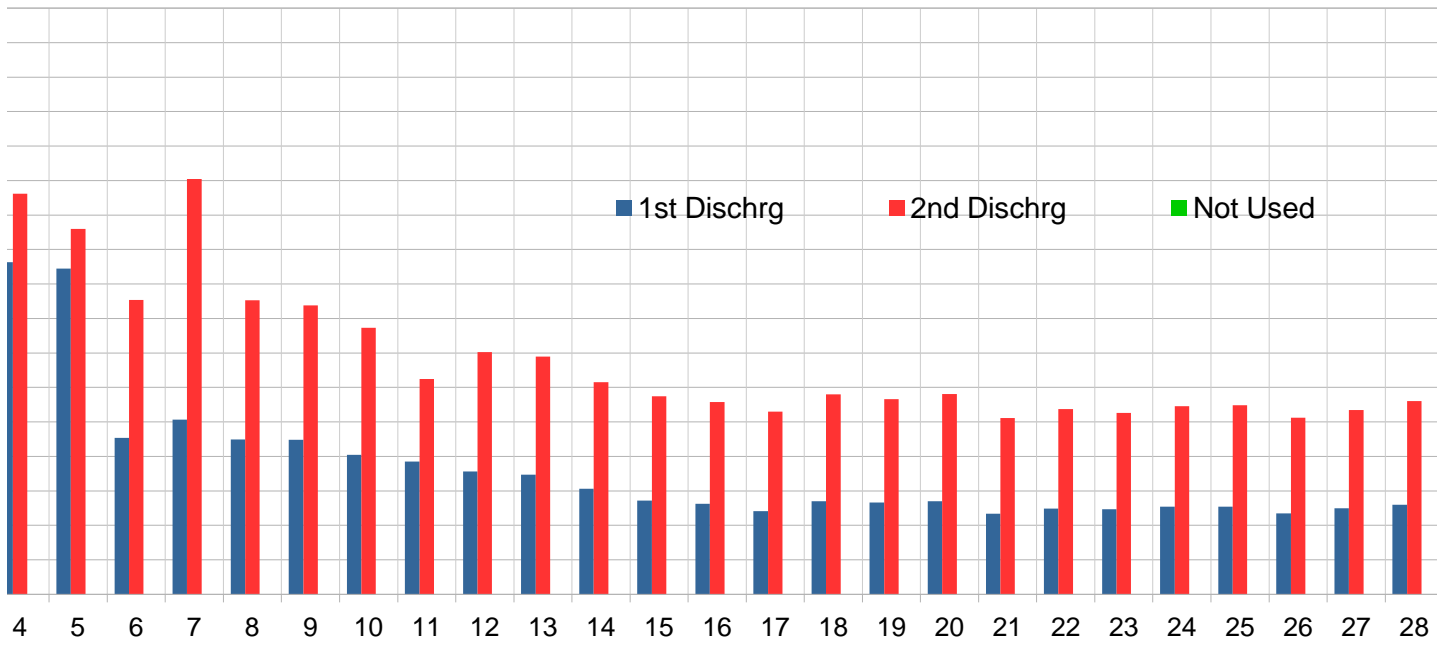
Mod. #	Internal Resist. mOhm	Initial Voltage	1 st Dischrg 6A to 6V mAh	1 st Charge 2A Auto (-dV) mAh	2 nd Dischrg 6A to 6V mAh	2 nd Charge 2A Auto (-dV) mAh	Not Used mAh
1	59	7.91	1969	4990	3060	4325	
2	59	7.85	1576	3656	2911	3098	
3	58	7.87	1721	3465	1989	2471	
4	59	7.90	1926	3743	2323	3672	
5	57	7.88	1890	3619	2120	3508	
6	57	7.89	907	2968	1708	2972	
7	55	7.85	1013	3050	2409	2850	
8	57	7.89	899	2822	1706	2741	
9	55	7.89	896	2240	1675	2649	
10	56	7.90	809	2110	1546	2493	
11	56	7.91	770	2350	1249	2225	
12	57	7.90	713	2315	1404	2255	
13	56	7.88	694	2380	1378	2257	
14	56	7.87	613	2110	1231	1992	
15	58	7.89	543	2010	1149	1920	
16	57	7.89	525	1989	1115	1851	
17	55	7.87	483	1967	1059	1786	
18	56	7.87	540	2004	1160	1953	
19	57	7.87	532	1970	1132	1835	
20	57	7.88	540	2069	1161	1922	
21	57	7.87	468	1889	1023	1678	
22	57	7.88	497	1944	1075	1746	
23	56	7.89	493	1842	1053	1744	
24	56	7.89	509	1906	1091	1821	
25	56	7.89	508	1971	1096	1816	
26	58	7.88	469	1835	1025	1750	
27	58	7.88	500	1868	1069	1786	
28	56	7.87	520	2016	1121	1866	
29	55	7.87	530	1972	1120	1874	
30	58	7.85	558	2219	1235	2065	
31	57	7.87	747	2384	1442	2303	
32	55	7.86	621	2275	1233	2099	
33	56	7.86	737	2525	1448	2370	
34	56	7.86	776	2640	1514	2594	
35	71	7.70	118	2147	1314	2305	
36	57	7.84	962	3043	1792		
37		7.84					
38		7.84					
39		7.83					
40		7.82					



Note: Module #1 is the one closest to the fan and air intake.

All testing done with 3 ft 18AWG leads with a Turnigy Reaktor 1000W charger.
10 Minute "Minimum" wait time between Discharge and Charge

Module Data



Module Data

